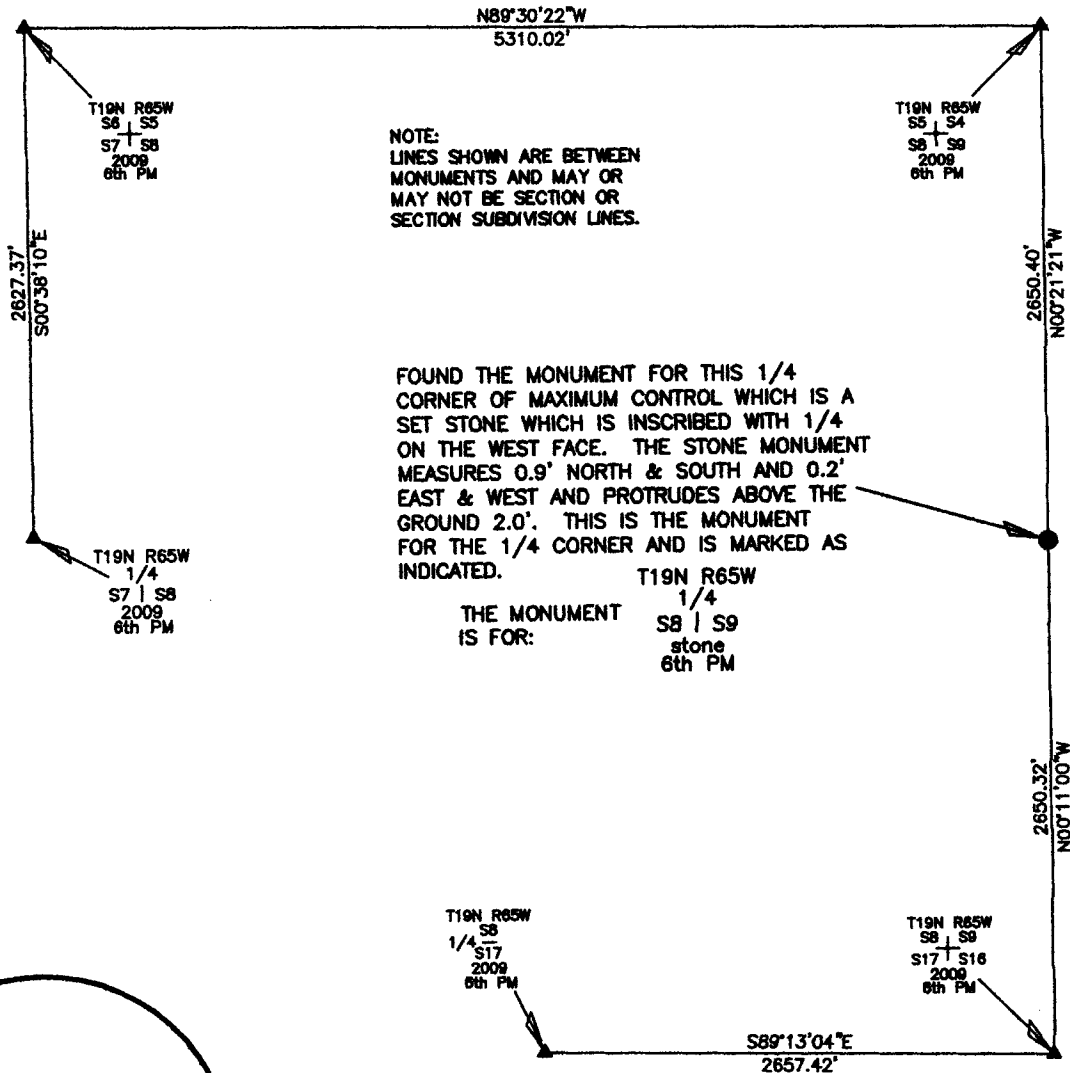


State of Wyoming Corner Record

(in compliance with the *CORNER PERPETUATION AND FILING ACT*, Wyoming Statutes, 1977, Section 36-11-101, et. seq., and the Rules and Regulations of the Board of Registration for Professional Engineers and Land Surveyors.)

Reverse side of this form may be used if more space is needed.

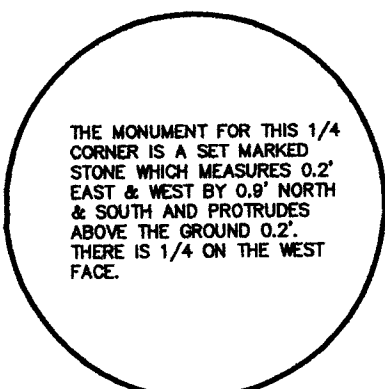
Record of original survey and citation of source of historic information (if corner is lost or obliterated). Description of corner monumentation evidence found and/or monument and accessories established to perpetuate the location of this corner. Sketch of relative location of monument, accessories, and reference points with course and distance to adjacent corner(s) (if determined in this survey). Method and rationale for reestablishment of lost or obliterated corner.



NOTE:
LINES SHOWN ARE BETWEEN MONUMENTS AND MAY OR MAY NOT BE SECTION OR SECTION SUBDIVISION LINES.

FOUND THE MONUMENT FOR THIS 1/4 CORNER OF MAXIMUM CONTROL WHICH IS A SET STONE WHICH IS INSCRIBED WITH 1/4 ON THE WEST FACE. THE STONE MONUMENT MEASURES 0.9' NORTH & SOUTH AND 0.2' EAST & WEST AND PROTRUDES ABOVE THE GROUND 2.0'. THIS IS THE MONUMENT FOR THE 1/4 CORNER AND IS MARKED AS INDICATED.

THE MONUMENT IS FOR:
T19N R65W
1/4
S8 | S9
stone
6th PM



THE MONUMENT FOR THIS 1/4 CORNER IS A SET MARKED STONE WHICH MEASURES 0.2' EAST & WEST BY 0.9' NORTH & SOUTH AND PROTRUDES ABOVE THE GROUND 0.2'. THERE IS 1/4 ON THE WEST FACE.

Marking on the Stone

CORNER MONUMENT SYMBOLS

- RECORD IS FOR THIS CORNER MONUMENT.
- ▲ A RELATED CORNER OR WC MONUMENT.

SCALE 1"=1000'
(EXCEPT IN TRIVIAL CASES)
BEARINGS ARE RELATED TO WGS 84 WITH GPS OBSERVATIONS
DRAWN BY: NJM
P.C. J. FLOYD
COUNTY: LARAMIE

Date of Field Work: 04/19/2009 Office Reference: _____

CROSS INDEX DIAGRAM

1 2 3 4 5 6 7 8 9 10 11 12 13 14 15 16 17 18 19 20 21 22 23 24 25																										
A																										A
B																										B
C	6		5		4		3		2		1															C
D																										D
E																										E
F																										F
G	7		8		9		10		11		12															G
H																										H
J																										J
K																										K
L	18		17		16		15		14		13															L
M																										M
N																										N
O																										O
P	19		20		21		22		23		24															P
Q																										Q
R																										R
S																										S
T	30		29		28		27		26		25															T
U																										U
V																										V
W																										W
X	31		32		33		34		35		36															X
Y																										Y
Z																										Z
1 2 3 4 5 6 7 8 9 10 11 12 13 14 15 16 17 18 19 20 21 22 23 24 25																										

Firm/Agency, Address

UELS, LLC
85 South 200 East
Vernal, Utah 84078
435-789-1017

This corner record was prepared by me or under my direction and supervision.

SEAL & SIGNATURE



RECORDED 6/22/2009 AT 12:06 PM REC# 525084 JK# 2118 PG# 882
DEBRA K. LATHROP, CLERK OF LARAMIE COUNTY, WY PAGE 1 OF 1

1/4 CORNER OF MAXIMUM CONTROL
Corner Name: EAST 1/4 CORNER OF SECTION 8 Section: 8 T 19N R 65W ; 6TH P.M. Cross Index No.: G-9
SBRPEPLS/PLSW: March 1994 (CLCR...SJA)